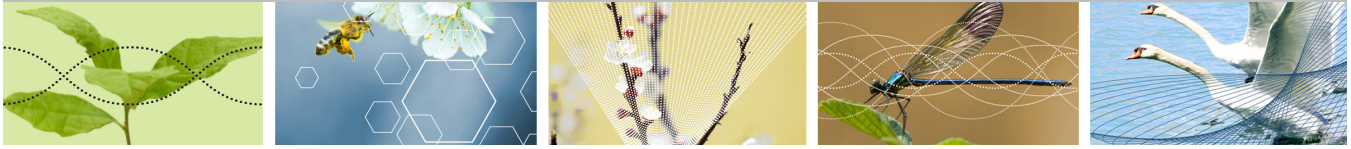


VISITING OUR OFFICE

LOCATION



Columbia Center Building • 701 Fifth Avenue, Suite 5400 • Seattle, WA 98104
206-622-4900 • Info@SeedIP.com

DRIVING DIRECTIONS

From Sea-Tac Airport: Follow signs leading to I-5 North, follow directions below for Northbound via I-5.

Northbound via I-5: Take Madison Street Exit. Turn left on Madison Street. Turn left on 5th Avenue. Turn right on Columbia Street. Turn left into parking garage, please bring your parking stub with you.

Southbound via I-5: Take James Street/Columbia Street Exit. Turn right on Columbia Street. Go through 5th Avenue intersection. Turn left into parking garage, please bring your parking stub with you.

Westbound via I-90: Take Seneca Street Exit. Turn left on 5th Avenue. Drive south about three blocks. Turn right on Columbia Street. Turn left into parking garage, please bring your parking stub with you.

Westbound via 520: Follow signs leading to I-5 South, follow directions above for Southbound via I-5.

PARKING VALIDATION

Seed IP will validate parking for clients and prospective clients. Please bring your parking stub to our Reception Desk (Suite 5400) and our receptionist will be happy to validate it for you.

ELEVATOR / ESCALATOR DIRECTIONS

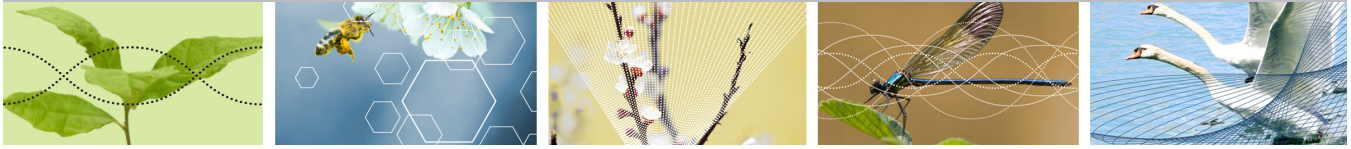
From Parking Garage: The entrance to the Columbia Center Parking Garage is on Columbia Street. Visitors are allowed to park on certain levels only, so please pay attention to signage. Take elevator to the 5th Avenue Lobby. Once you have reached the 5th Avenue Lobby, find the elevator bank marked **Floors 37-76**. Take one of the six available elevator cars to the **Sky Lobby (aka Floor 40)**. As you exit the elevator, an automated voice will tell you which direction to turn. Listen closely for the directions to reach **Floors 47-55**, then proceed to the elevators that are labeled as such. Once in the elevator press "54" and you will arrive at Seed IP Law Group.

From 4th Avenue Entrance: Take a series of three escalators up to the 5th Avenue Lobby level. Once you have reached the 5th Avenue Lobby, find the elevator bank marked **Floors 37-76**. Take one of the six available elevator cars to the **Sky Lobby (aka Floor 40)**. As you exit the elevator, an automated voice will tell you which direction to turn. Listen closely for the directions to reach **Floors 47-55**, then proceed to the elevators that are labeled as such. Once in the elevator press "54" and you will arrive at Seed IP Law Group.

From 5th Avenue Entrance: Once inside the 5th Avenue Lobby, find the elevator bank marked **Floors 37-76**. Take one of the six available elevator cars to the **Sky Lobby (aka Floor 40)**. As you exit the elevator, an automated voice will tell you which direction to turn. Listen closely for the directions to reach **Floors 47-55**, then proceed to the elevators that are labeled as such. Once in the elevator press "54" and you will arrive at Seed IP Law Group.

VISITING OUR OFFICE

LIGHT RAIL



CENTRAL LINK LIGHT RAIL DIRECTIONS (SEA-TAC AIRPORT TO DOWNTOWN SEATTLE)

Once you arrive at Sea-Tac Airport, cross any of the sky bridges, all of which lead directly into the parking garage. Once you are in the parking garage, turn left and stay left as you continue to walk. You will soon notice a dedicated pathway that rests alongside the far left perimeter/edge/wall of the parking garage; this pathway leads directly to the Central Link Light Rail Station. The duration is the equivalent of walking 1-2 blocks, depending upon which sky bridge you cross.

As soon as you enter the Central Link Light Rail Station, please visit a Ticket Vending Machine (TVM) in order to buy either a one-way or roundtrip ticket. TVMs accept cash, VISA or MasterCard. You cannot purchase tickets once on board, so please have valid fare before getting on the train.

One-way adult ticket cost: \$3.00 (from Sea-Tac to downtown Seattle)

The map below outlines the many stops between Sea-Tac Airport and downtown Seattle. All/most of the earlier stops exit at ground level. The last 4 stops will be in an underground tunnel; you will need to use the escalators/elevators to then reach ground level. To reach Seed IP Law Group, you will want to exit the train at the Pioneer Square Station. Most downtown hotels can be accessed by taking any of the last three stops, with Westlake Station being at the absolute center of Seattle's downtown core.

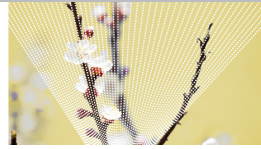


Approximate train frequencies - weekdays

5:00 a.m. - 6:00 a.m.	Every 15 minutes
6:00 a.m. - 8:30 a.m.	Every 6 minutes
9:30 a.m. - 3:00 p.m.	Every 10 minutes
3:00 p.m. - 6:30 p.m.	Every 6 minutes
6:30 p.m. - 10:00 p.m.	Every 10 minutes
10:00 p.m. - 1:00 a.m.	Every 15 minutes

VISITING OUR OFFICE

SEATTLE MAP

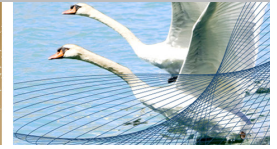
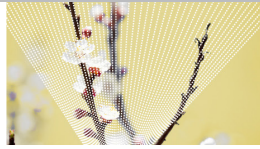


Seed IP Law Group
Columbia Center Bldg.
701 Fifth Avenue
Suite 5400

VISITING OUR OFFICE

HOTELS (with live links)

Seed^{IP}



NEARBY HOTELS (WITHIN 1-4 BLOCKS OF SEED IP)

- 1 Arctic Club Hotel (DoubleTree) | 700 3rd Avenue | 206.340.0340 | www.thearcticclubseattle.com
- 2 Courtyard Marriott (Downtown/Pioneer Square) | 612 2nd Avenue | 206-625-1111 | www.marriott.com
- 3 The Fairmont | 411 University Street | 206.621.1700 | www.fairmont.com
- 4 Hilton | 1301 6th Avenue | 206.624.0500 | www.thehiltonseattle.com
- 5 Holiday Inn Crowne Plaza | 1113 6th Ave | 206.464.1980 | www.crowneplaza.com
- 6 Hotel Audrey | 801 5th Avenue | 206.800.8110 | www.themarkseattle.com
- 7 Hotel Monaco (Kimpton) | 1101 4th Avenue | 206.621.1770 | www.monaco-seattle.com
- 8 Hotel Vintage (Kimpton) | 1100 5th Avenue | 206.624.8000 | www.kimptonhotels.com
- 9 Motif Seattle | 1415 5th Avenue | 206.971.8000 | www.motifseattle.com
- 10 Renaissance Seattle (Marriott) | 515 Madison Street | 206.583.0300 | www.marriott.com
- 11 W Hotel | 1112 4th Avenue | 206.264.6000 | www.starwoodhotels.com

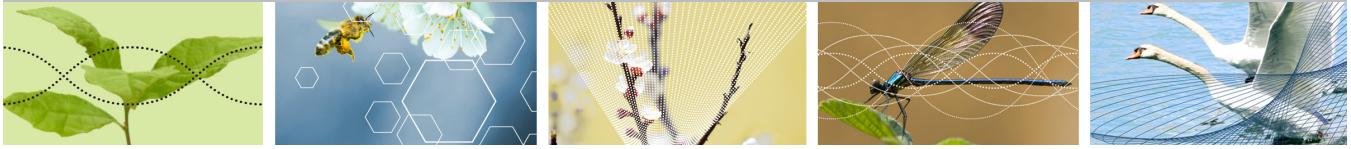
NEARBY HOTELS (WITHIN 5-7 BLOCKS OF SEED IP)

- 12 Alexis Hotel (Kimpton) | 1007 1st Avenue | 206.624.4844 | www.alexishotel.com
- 13 Four Seasons | 99 Union Street | 206.749.7000 | www.fourseasons.com
- 14 Hotel 1000 | 1000 1st Avenue | 206.957.1000 | www.hotel1000seattle.com
- 15 Hotel Max | 620 Stewart Street | 206.728.6299 | www.hotelmaxseattle.com
- 16 Grand Hyatt Seattle | 721 Pine Street | 206.774.1234 | www.grandseattle.hyatt.com
- 17 Hyatt at Olive 8 | 1635 8th Avenue | 206.695.1234 | www.hyatt.com
- 18 Hyatt Regency Seattle | 808 Howell St | 206.973.1234 | www.hyatt.com
- 19 Inn at the Market | 86 Pine Street | 206.443.3600 | www.innatthemarket.com
- 20 Paramount Hotel | 724 Pine Street | 206.292.9500 | www.paramounthotelseattle.com
- 21 Hotel Theodore | 1351 7th Avenue | 206.621.1200 | www.hoteltheodore.com
- 22 Sheraton | 1400 6th Avenue | 206.621.9000 | www.sheratonseattle.com
- 23 Thompson Hotel | 110 Stewart St | 206.623.4600 | www.thompsonhotels.com
- 24 Westin | 1900 5th Avenue | 206.728.1000 | www.westinseattle.com

VISITING OUR OFFICE

RESTAURANTS (with live links)

Seed^{IP}



NEARBY RESTAURANTS & BARS (WITHIN 1-3 BLOCKS OF SEED IP)

- 1** Food Court in the Columbia Center (many choices) | 701 5th Avenue (at the 4th Avenue level)
- 2** Juno Restaurant | 700 3rd Avenue | 206.631.8080 | theartcticclubseattle.com
- 3** Metropolitan Grill | 820 2nd Avenue | 206.624.3287 | www.themetropolitangrill.com
- 4** Polar Bar | 700 3rd Avenue | 206.631.8082 | theartcticclubseattle.com
- 5** Sazerac | 1101 4th Avenue | 206.624.7755 | www.sazeracrestaurant.com
- 6** Tulio | 1100 Fifth Avenue | 206.624.5500 | www.hotelvintage-seattle.com/tulio-restaurant

NEARBY RESTAURANTS & BARS (WITHIN 4-6 BLOCKS OF SEED IP)

- 7** The Brooklyn Seafood, Steak & Oyster House | 1212 2nd Avenue | 206.224.7000 | www.thebrooklyn.com
- 8** Frolik Kitchen & Cocktails (at Hotel Motif) | 1415 5th Avenue | 206.971.8015 | frolik.motifseattle.com
- 9** Purple Café & Wine Bar | 1225 4th Avenue | 206.829.2280 | www.thepurplecafe.com
- 10** Shucker's Oyster Bar | 411 University St. | 206.621.1984 | fairmont.com/seattle/dining/shuckers
- 11** TRACE Bar (at W Hotel) | 1112 4th Avenue | 206.264.6060 | www.traceseattle.com
- 12** Wild Ginger | 1401 3rd Avenue | 206.623.4450 | www.wildginger.net

NEARBY RESTAURANTS & BARS (WITHIN 7-9 BLOCKS OF SEED IP)

- 13** Anthony's Homeport | 2201 Alaskan Way, Pier 66 (Waterfront) | 206.448.6688 | www.anthonys.com
- 14** Blueacre Seafood | 1700 7th Avenue | 206.659.0737 | blueacreseafood.com
- 15** Cutters Crabhouse | 2001 Western Avenue (near Pike Place Market) | 206.448.4884 | www.cuttersbayhouse.com
- 16** El Gaucho | 2505 1st Avenue | 206.728.1337 | www.elgaucho.com
- 17** El Gaucho Aqua | 2801 Alaskan Way, Pier 70 (Waterfront) | 206.956.9171 | www.elgaucho.com
- 18** Elephant & Castle Pub & Restaurant | 1415 5th Avenue | 206.624.9977 | www.elephantcastle.com/seattle
- 19** The Nest | 110 Stewart Street | 206.623.4600 | thompsonhotels.com/the-nest
- 20** Palace Kitchen | 2030 5th Avenue | 206.448.2001 | tomdouglas.com
- 21** Loulay | 600 Union Street | 206.402.4588 | www.thechefinthehat.com/loulay-kitchen-seattle
- 22** Steelhead Diner | 95 Pine Street (Pike Place Market) | 206.625.0129 | www.steelheaddiner.com